

# FIELD TRIAL UPPER HARZ MOUNTAINS, GERMANY

## PROJECT OBJECTIVE

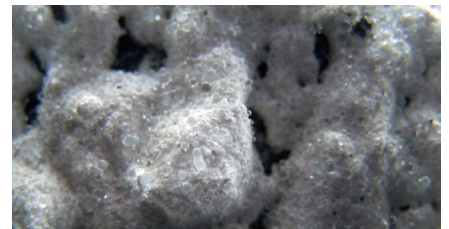
Highly visible road markings are crucial to road safety. Motorists need to be able to clearly see the line markings that guide them – especially during nighttime driving or in weather conditions that restrict visibility (fog, rain or snow).

Testing has repeatedly, and undeniably, shown that cold plastics based on methyl methacrylate (MMA) res-

ins achieve the best longlasting retro-reflectivity for road markings. A field trial in the Upper Harz Mountains in Germany has proven just how extremely durable and resilient this material is even when subjected to the extreme impact of regular road clearing by snow plows during the winter.

Featuring a range of different road marking materials, this testing field

was exposed to several years of winter road clearance, with an independent group of experts regularly monitoring material performance, focusing on how it was performing under frequent snow plowing. The results achieved by the DEGAROUTE® based MMA cold plastic markings speak for themselves!



Even after 5 years on the road, the DEGAROUTE® based markings still fulfill the requirements of a Type 2 marking.

SITE		APPLICATION	
COUNTRY	Germany	SYSTEM	Cold plastic agglomerate markings
LOCATION	Upper Harz Mountains	APPLICATION TECHNIQUE	Spike bar
ROAD	National Highway 4	SURFACE	Asphalt
APPLICATION DATE	August 2006	SURFACE PREPARATION	Existing asphalt

## PERFORMANCE

- After the first three winter seasons, some of the sample markings already showed clear signs of deterioration as caused by the snowplows
- 70 sample markings in total required either elimination or at least replacement during the period of 2009 to 2012
- Even after 5 years on the road, the DEGAROUTE® based markings still fulfill the requirements of a Type 2 marking